

## PRODUCT CATALOGUE



[www.jardibest.com](http://www.jardibest.com)    [info@jardibest.com](mailto:info@jardibest.com)

CE ISO 9001

## Application

- To transfer clean water with liquid temperature between 0°C and 40°C
- Applicable in water supply and drainage for factories, mines, municipal facilities as well as field irrigation, etc.

## Features

- New unique design with ergonomic feature
- Portable and compact pump frame
- High quality engine with excellent performance and long service life
- Impeller designed with high efficient hydraulic system
- Low fuel consumption

## Pump

- Anti-rust cast iron impeller and diffuser
- Max. Suction: 8 m, Suck 5 m needs 120 s
- Inlet/outlet: 25 mm/38 mm

## Engine

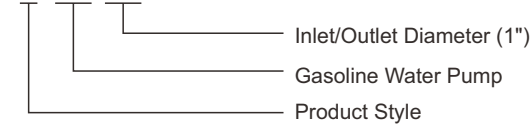
- Single cylinder, 2-stroke, Air-cooled
- Max. power: 1.6 HP
- Rated speed: 7500rpm
- Mixture ratio of fuel: 1:25 (2-stroke engine oil and 90 octane gasoline or higher)



**XGP**

## Identification Codes

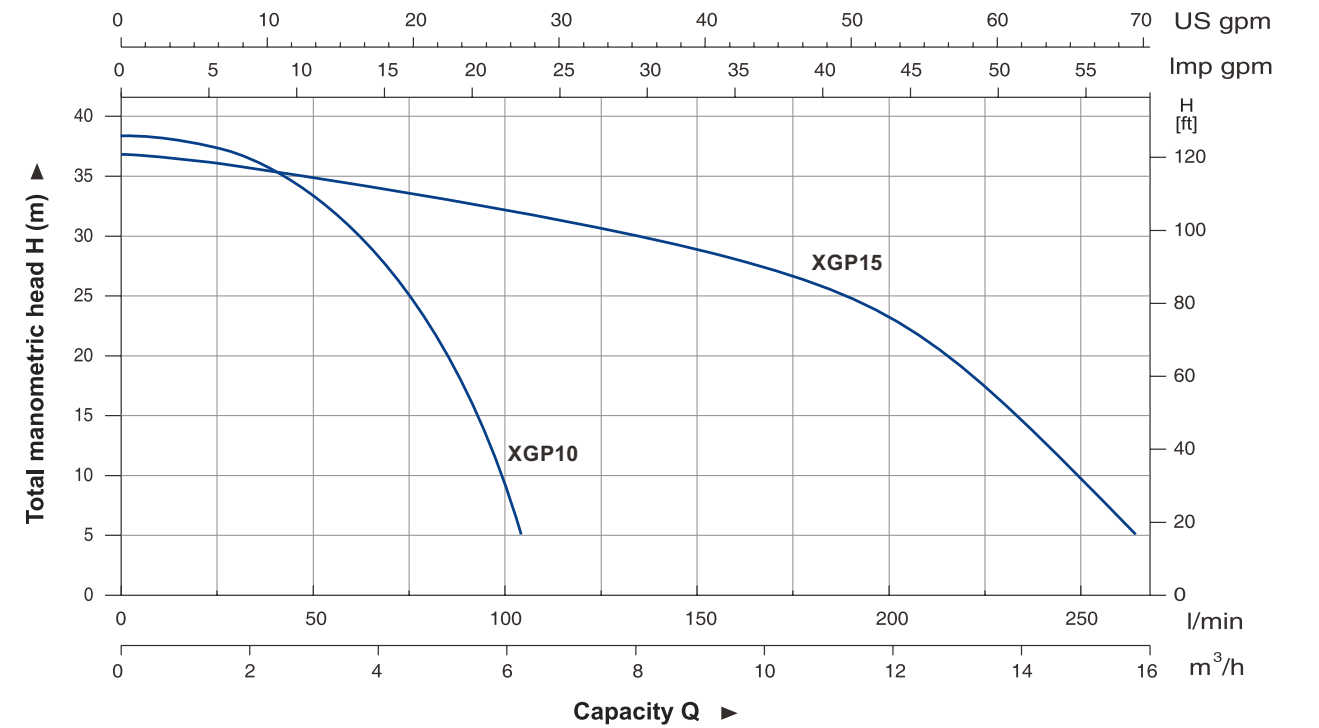
**X GP 10**



## Technical Data

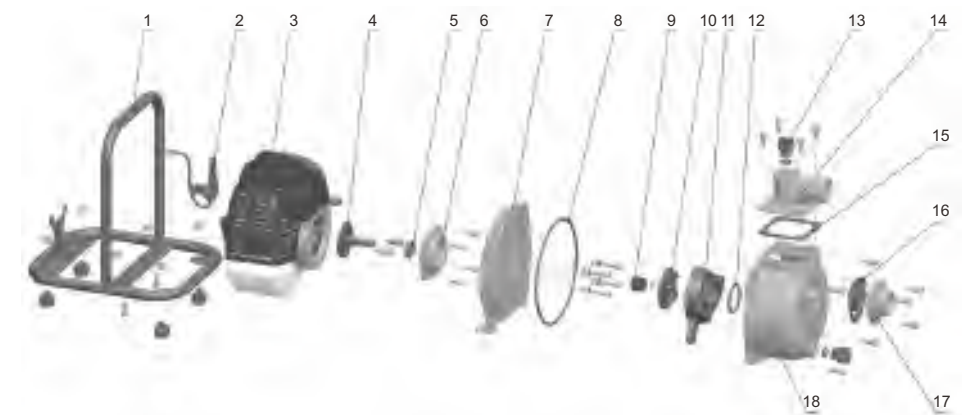
Model	Power HP	Mixed Fuel tank L	Displacement cc	Q(m³/h) Q(l/min)	H (m)												
					0	2	4	6	8	10	12	14	16	18			
XGP10	1.6	1	42.7	38	35.7	26.9	6	-	-	-	-	-	-	-	-	-	
XGP15	1.6	1	42.7	37	36.8	34	33	30	22.5	23.5	15	5	-	-	-	-	

## Hydraulic Performance Curve



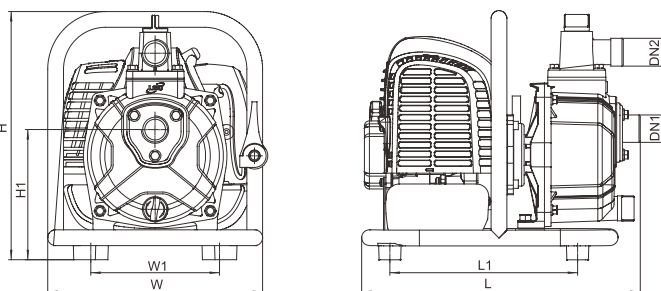
## Materials Table

No.	Part	Material
1	Frame	Steel
2	Throttle trigger	
3	Engine	
4	Crankshaft	
5	Bearing	
6	Seat connection	Aluminum
7	Pump cover	Aluminum
8	O-ring	NBR
9	Mechanical seal	Carbon/Ceramic
10	Impeller	HT200
11	Diffuser	HT200
12	O-ring	NBR
13	Plug	PP
14	Outlet	Aluminum
15	Seal	NBR
16	Non-return valve	NBR
17	Inlet	Aluminum
18	Pump body	Aluminum



## Package Information

Model	GW (kgs)	L (mm)	W (mm)	H (mm)	Quantity (PCS/20' TEU)
XGP10	6.84	350	290	325	702
XGP15	8.27	355	290	370	681



## Dimension

Model	DN1	DN2	L (mm)	W (mm)	H (mm)	L1 (mm)	W1 (mm)	H1 (mm)
XGP10	1"	1"	336	279	300	217.5	155	157
XGP15	1 1/2"	1 1/2"	344	279	345	233	175	180

### Application

- To transfer clean water with liquid temperature between 0°C and 40°C
- Application in water supply and drainage for factories, mines, municipal facilities as well as field irrigation, ect.

### Features

- 4-stroke gasoline engine power performance, structural optimization and upgrading
- Ignition more convenient, more complete combustion, low energy consumption, more environmentally friendly
- Strengthened pump body ensures more durable and reliable service
- Better sealing effect by using special mechanical seal
- Impeller designed with high efficient hydraulic system

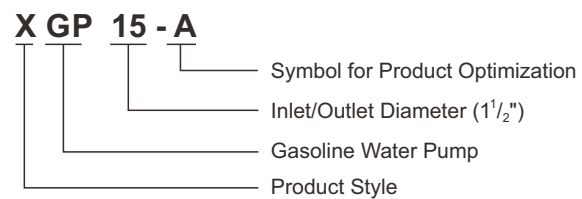
### Pump

- Anti-rust cast iron impeller and diffuser
- Max.Suction: 8 m , Suck 5 m needs 120 s
- Inlet/outlet: 38 mm

### Engine

- Single cylinder, 4-stroke, Air-cooled
- Max.power: 3 HP
- Rated speed: 3600 rpm

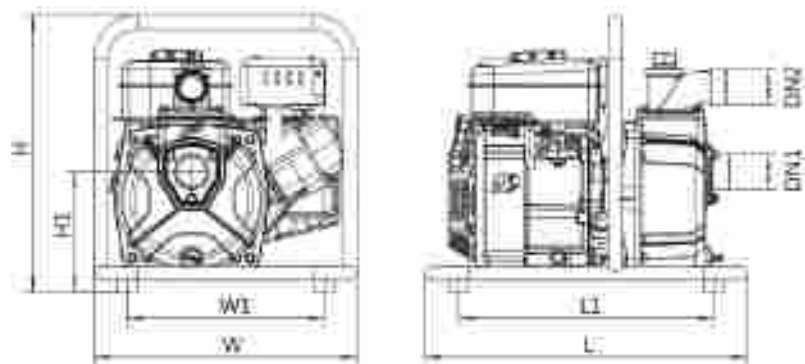
### Identification Codes



**XGP**

### Technical Data

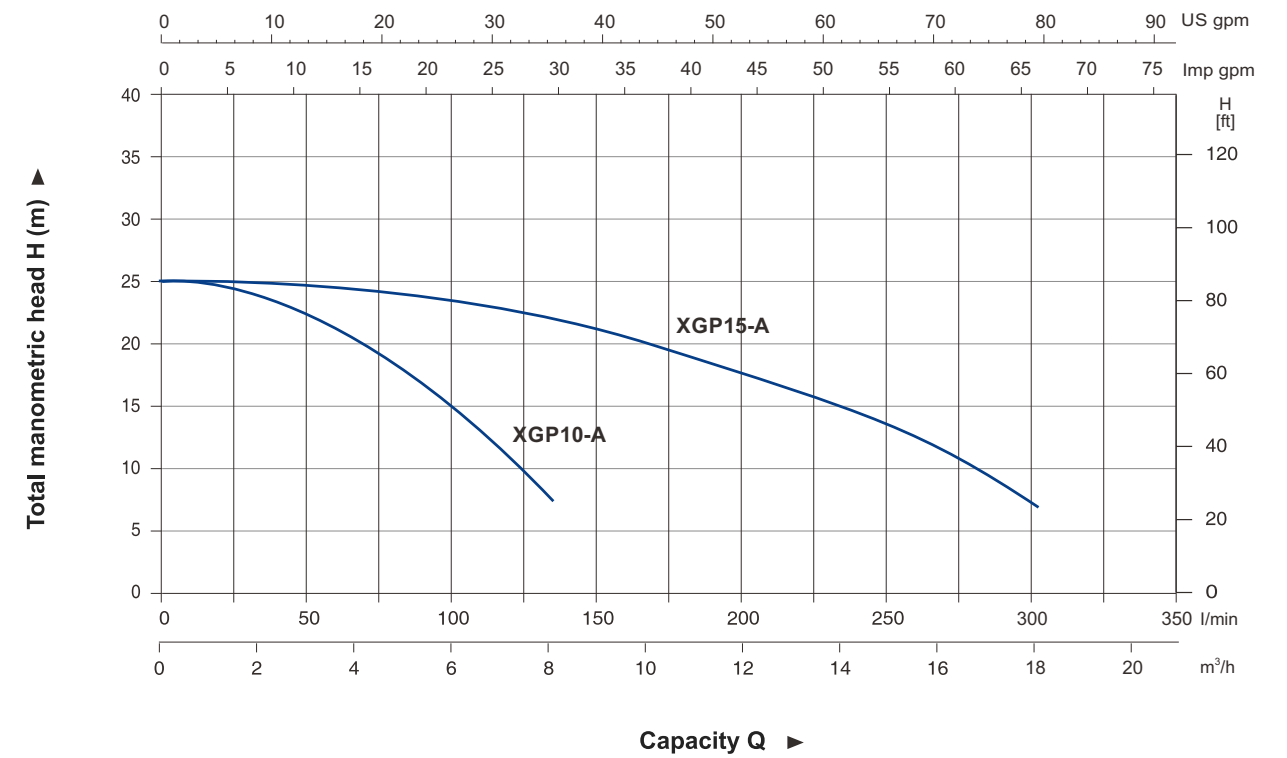
Model	Power HP	Fuel tank L	Engine oil L	Displacement cc	Engine	Q (m³/h)																				
						0	2	4	6	8	10	12	14	16	18											
XGP10-A	3	1.8	0.35	79	G79	0	33.3	66.7	100	133.3	166.7	200	233.3	266.7	300	H (m)										
XGP15-A	3	1.8	0.35	87	G87	25	24	20.2	15	7.5	-	-	-	-	-	25	25	24.8	23	22	20	17	15	12	7.2	



### Dimension

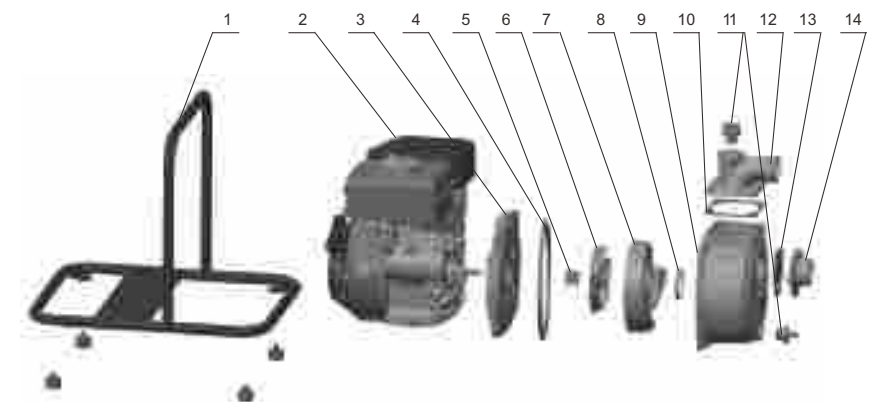
Model	DN1	DN2	L (mm)	W (mm)	H (mm)	L1 (mm)	W1 (mm)	H1 (mm)
XGP10-A	1"	1"	438	380	377	346	268	158
XGP15-A	1 1/2"	1 1/2"	438	380	377	346	268	164.2

### Hydraulic Performance Curve



### Materials Table

No.	Part	Material
1	Frame	Steel
2	Engine	
3	Pump cover	Aluminum
4	O-ring	NBR
5	Mechanical seal	Carbon/Ceramic
6	Impeller	HT200
7	Diffuser	HT200
8	O-ring	NBR
9	Pump body	Aluminum
10	Seal	NBR
11	Plug	PP
12	Outlet	Aluminum
13	Non-return valve	NBR
14	Inlet	Aluminum



### Package Information

Model	GW (kgs)	L (mm)	W (mm)	H (mm)	Quantity (PCS/20' TEU)
XGP10-A	13	464	378	400	330
XGP15-A	14.5	464	378	400	330





## Application

- To transfer clean water with liquid temperature between 0°C and 40°C
- Application in water supply and drainage for factories, mines, municipal facilities as well as field irrigation, ect.

## Features

- Flexible multi-directional discharge
- Durable steel frame
- Compact for easy carrying
- Quiet and reliable engine
- Low emission and fuel consumption

## Pump

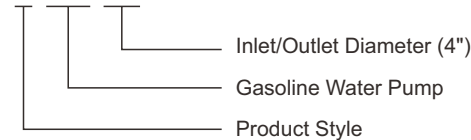
- Cast iron impeller and cast aluminum housing for long life time
- Max. suction: 8 m, suck 5 m needs 120 s
- Inlet/outlet: 100 mm

## Engine

- Single cylinder, 4-stroke, Air-cooled
- Max. power: 6.5 HP
- Rated speed: 3600 rpm
- Reliable engine equipped with low engine oil shut off system

## Identification Codes

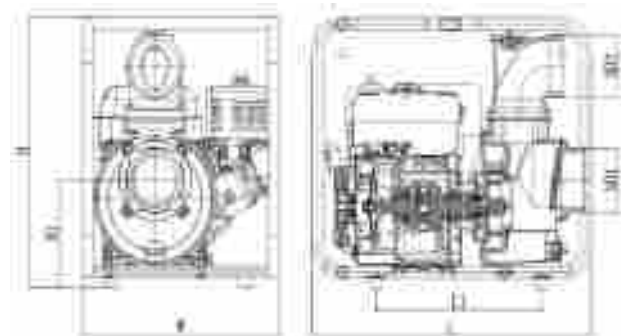
### X GP 40



**XGP**

## Technical Data

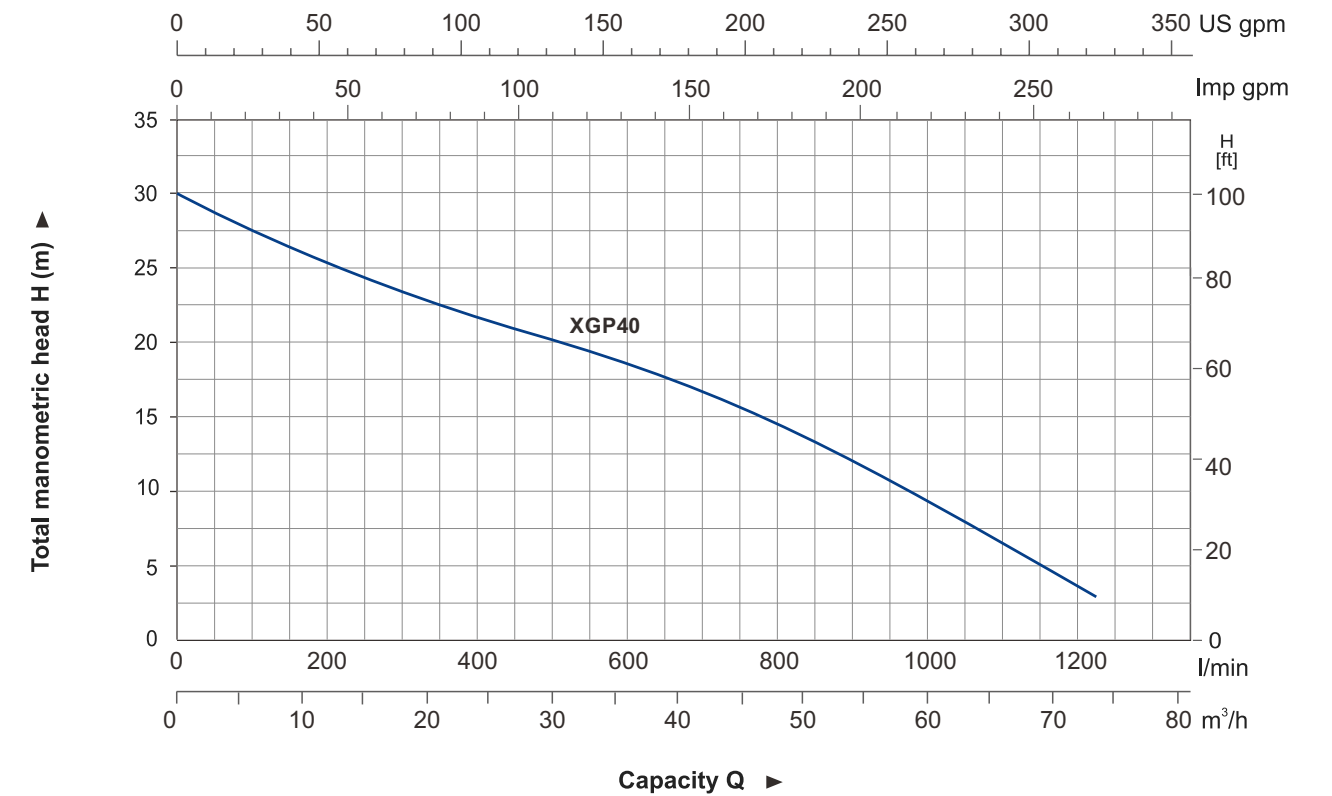
Model	Power HP	Fuel tank L	Engine Oil L	Displacement cc	Engine	Q (m³/h)								
						0	10	20	30	40	50	60	72	
XGP40	6.5	2.8	0.55	196	G200	Q (l/min)	0	166.7	333.3	500	666.7	833.3	1000	1200
						H (m)	30	26	22.6	20.1	17.1	13.3	9	3.1



## Dimension

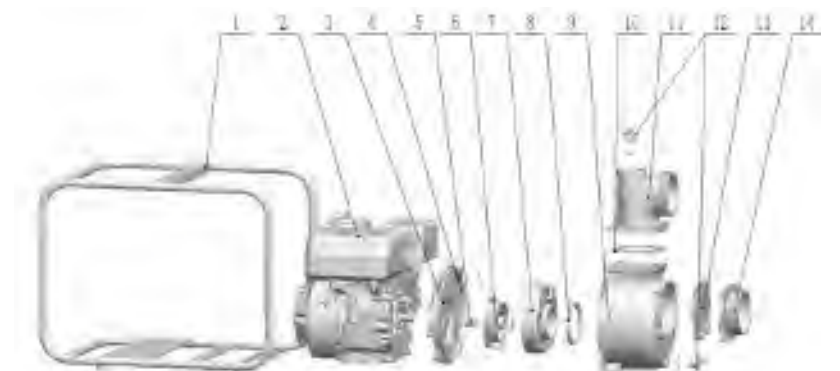
Model	DN1	DN2	L (mm)	W (mm)	H (mm)	H1 (mm)	L1 (mm)
XGP40	4"	4"	555	393	479	190	330

## Hydraulic Performance Curve



## Materials Table

No.	Part	Material
1	Frame	Steel
2	Gasoline engine	
3	Pump cover	ADC12
4	O-ring	NBR
5	Mechanical seal	Carbon/Ceramic
6	Impeller	Cast iron
7	Diffuser	Cast iron
8	O-ring	NBR
9	Pump body	Aluminum
10	Gasket	NBR
11	Outlet	Aluminum
12	Filling plug	PA6
13	Non-return valve	NBR
14	Inlet	Aluminum



## Package Information

Model	GW (Kgs)	L (mm)	W (mm)	H (mm)	Quantity (PCS/20 TEU)
XGP40	24.3	570	400	490	232

### Application

- To transfer clean water with liquid temperature between 0°C and 40°C
- Application in water supply and drainage for factories, mines, municipal facilities as well as field irrigation, ect.
- Suitable for longer distance and greater height water transfer

### Features

- New unique design with ergonomic feature
- Portable and compact pump frame
- High quality motor with excellent performance and long service life
- Impeller designed with high efficient hydraulic system
- Low fuel consumption
- Engine as default, BS/Honda engine is optional

### Pump

- Anti-rust cast iron diffuser
- Max.Suction: 8 m , Suck 5 m needs 120 s
- Inlet/outlet: 50 mm/2 x 38 mm+1 x 50 mm  
38 mm/1 x 38 mm+2 x 25 mm

### Engine

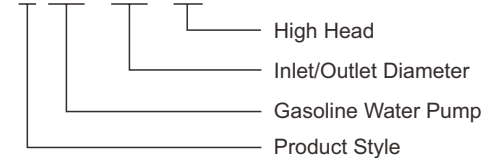
- Single cylinder, 4-stroke, Air-cooled
- Max.power: 6.5 HP
- Rated speed: 3600 rpm
- Reliable engine equipped with low engine oil shut off system



**XGP**

### Identification Codes

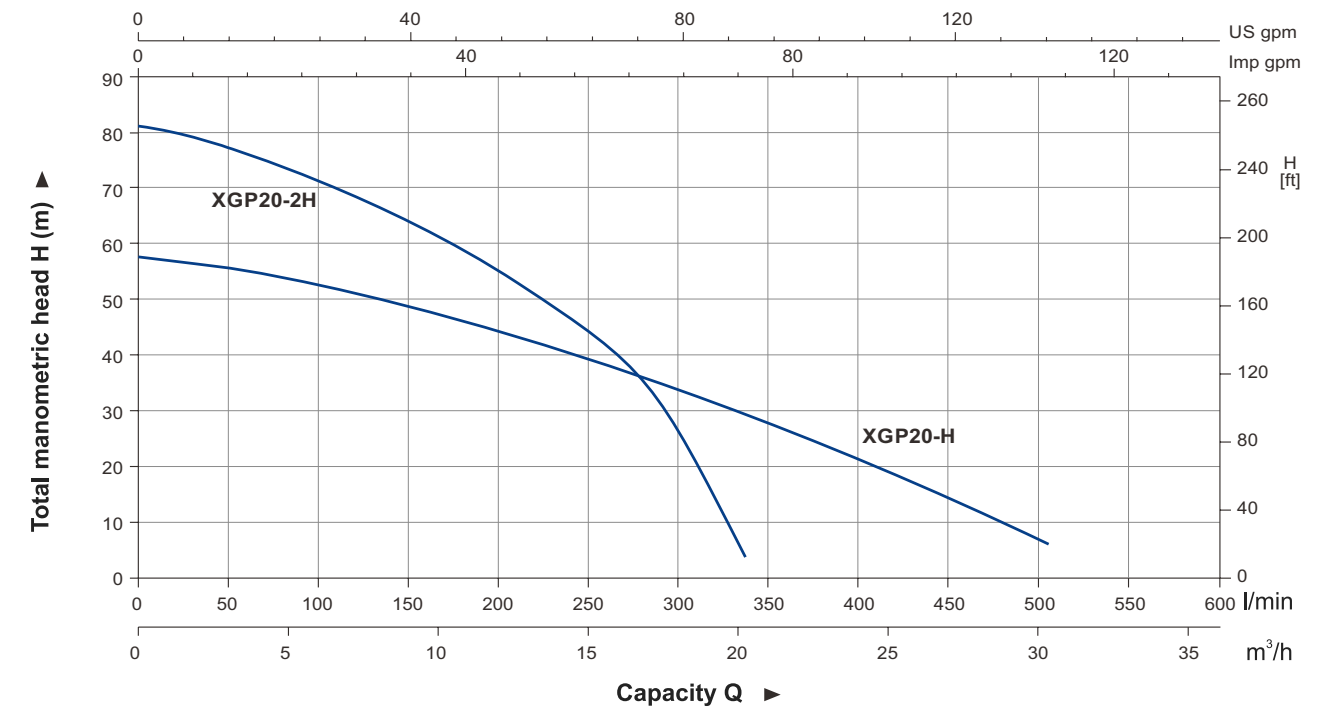
**X GP 20 - H**



### Technical Data

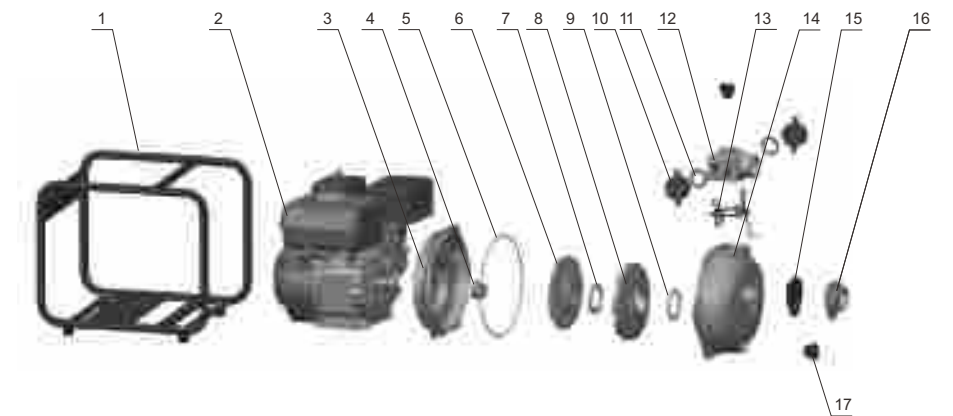
Model	Power	Fuel tank	Engine Oil	Displacement	Q(m³/h)							
	HP	L	L	cc	0	5	10	15	20	25	30	
XGP20-H	6.5	2.8	0.55	196	H (m)	58	51	45	38.5	29	19	6
XGP20-2H	6.5	2.8	0.55	196		81	72.5	60	45	5	-	-

### Hydraulic Performance Curve



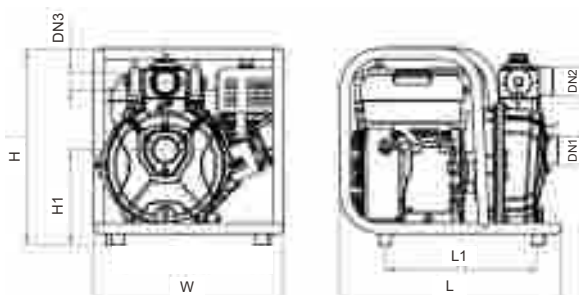
### Materials Table

No.	Part	Material
1	Frame	Steel
2	Engine	
3	Bracket	Aluminum
4	Mechanical seal	Carbon/Ceramic
5	O-ring	NBR
6	Impeller	Aluminum
7	Seal ring	NBR
8	Diffuser	HT200
9	Seal ring	NBR
10	Pipe blanking cap	PP
11	Seal ring	NBR
12	Outlet	Aluminum
13	Gasket	NBR
14	Pump body	Aluminum
15	Non-return valve	NBR
16	Inlet	Aluminum
17	Filling plug	PA6



### Package Information

Model	GW (kgs)	L (mm)	W (mm)	H (mm)	Quantity (PCS/20'TEU)
XGP20-H	23.22	470	412	432	305
XGP20-2H	23.24	470	412	432	305



### Dimension

Model	DN1	DN2	2xDN3	L (mm)	W (mm)	H (mm)	H1 (mm)
XGP20-H	2"	2"	1.5"	463	398	406	200
XGP20-2H	2"	2"	1.5"	463	398	406	200



**XGP**

### Application

- To transfer clean water with liquid temperature between 0°C and 40°C
- Application in water supply and drainage for factories, mines, municipal facilities as well as field irrigation, ect.

### Features

- Strengthened cast-iron pump body ensures more durable and reliable service
- Impeller designed with high efficient hydraulic system
- High quality engine with excellent performance and long service life
- Better sealing effect by using special mechanical seal
- Low fuel consumption

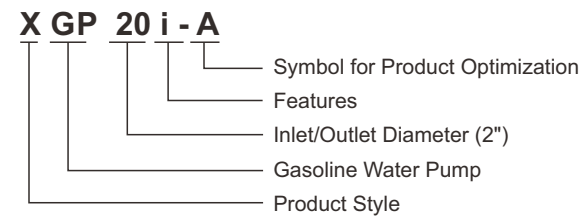
### Pump

- Anti -rust cast iron pump body
- Aluminum alloy impeller
- Max.Suction: 8 m , Suck 5 m needs 120 s
- Inlet/outlet: 50 mm

### Engine

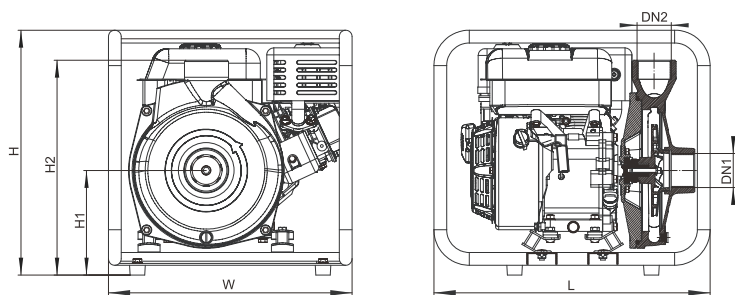
- Single cylinder, 4-stroke, Air-cooled
- Max.power: 6.5 HP
- Rated speed: 3600 rpm
- Reliable engine equipped with low engine oil shut off system

### Identification Codes



### Technical Data

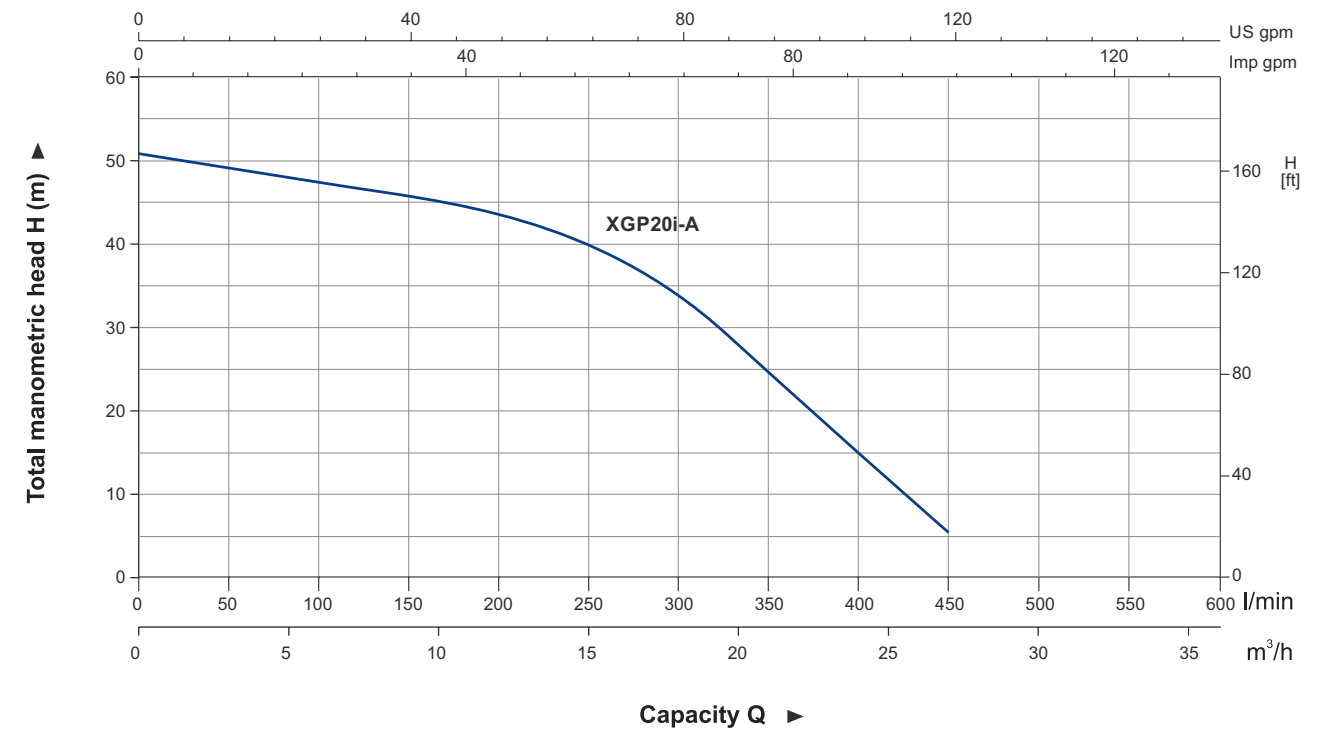
Model	Power	Fuel tank	Engine Oil	Displacement	Q(m³/h)	0	5	10	15	20	25
	HP	L	L	cc	Q(l/min)	0	83.3	166.7	250	333.3	416.7
XGP20i-A	6.5	2.8	0.55	196	H (m)	51	48	46	40	28	11.5



### Dimension

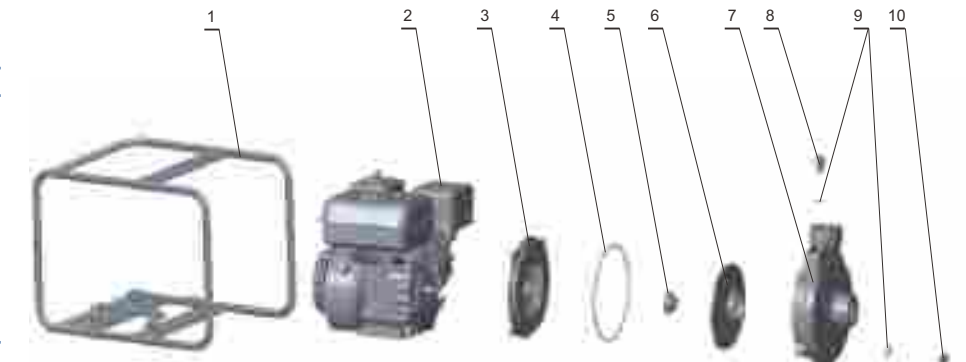
Model	DN1	DN2	L (mm)	W (mm)	H (mm)	H1 (mm)	H2 (mm)
XGP20i-A	2"	2"	476	420	440	180	370

### Hydraulic Performance Curve



### Materials Table

No.	Part	Material
1	Frame	Steel
2	Engine	
3	Pump cover	HT200
4	O-ring	NBR
5	Mechanical seal	Carbon/Ceramic
6	Impeller	Aluminum
7	Pump body	HT200
8	Plug	HPb59-1
9	O-ring	NBR
10	Plug	HPb59-1



### Package Information

Model	GW (kgs)	L (mm)	W (mm)	H (mm)	Quantity (PCS/20'TEU)
XGP20i-A	30	470	433	450	325

## Application

- To transfer clean water with liquid temperature between 0°C and 40°C
- Application in water supply and drainage for factories, mines, municipal facilities as well as field irrigation, ect.

## Features

- Strengthened aluminium alloy pump body ensures more durable and reliable service
- Original design of the pump body for easy cleanout
- Impeller designed with high efficient hydraulic system
- Honda engine with excellent performance and long service life
- Better sealing effect by using special mechanical seal
- Low fuel consumption
- Honda Engine

## Pump

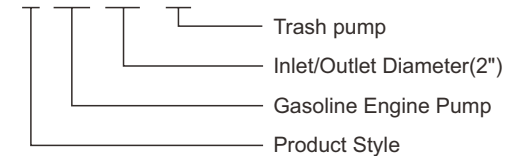
- Aluminum alloy pump body
- Anti -rust cast iron impeller
- Max. suction: 8 m
- Rated suction: 5 m / 120 s
- Inlet/outlet: 50 mm / 50 mm , 80 mm / 80 mm
- Max.diameter of particle: 22 mm
- Liquid temperature range: 0°C ~ 40°C

## Engine

- Single cylinder,4-stroke, Air-cooled
- Max.power: 9 HP
- Displacement: 163 cc , 270 cc
- Rated speed: 3600 rpm

## Identification Codes

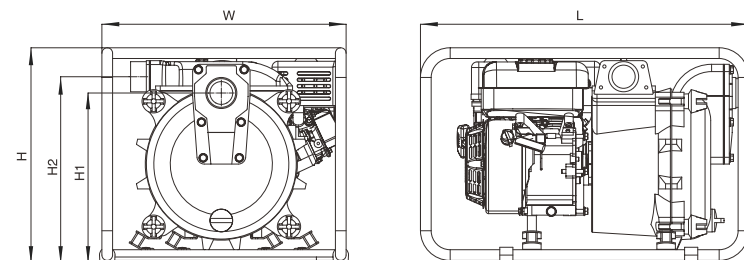
### X GP 20 - T



**XGP**

## Technical Data

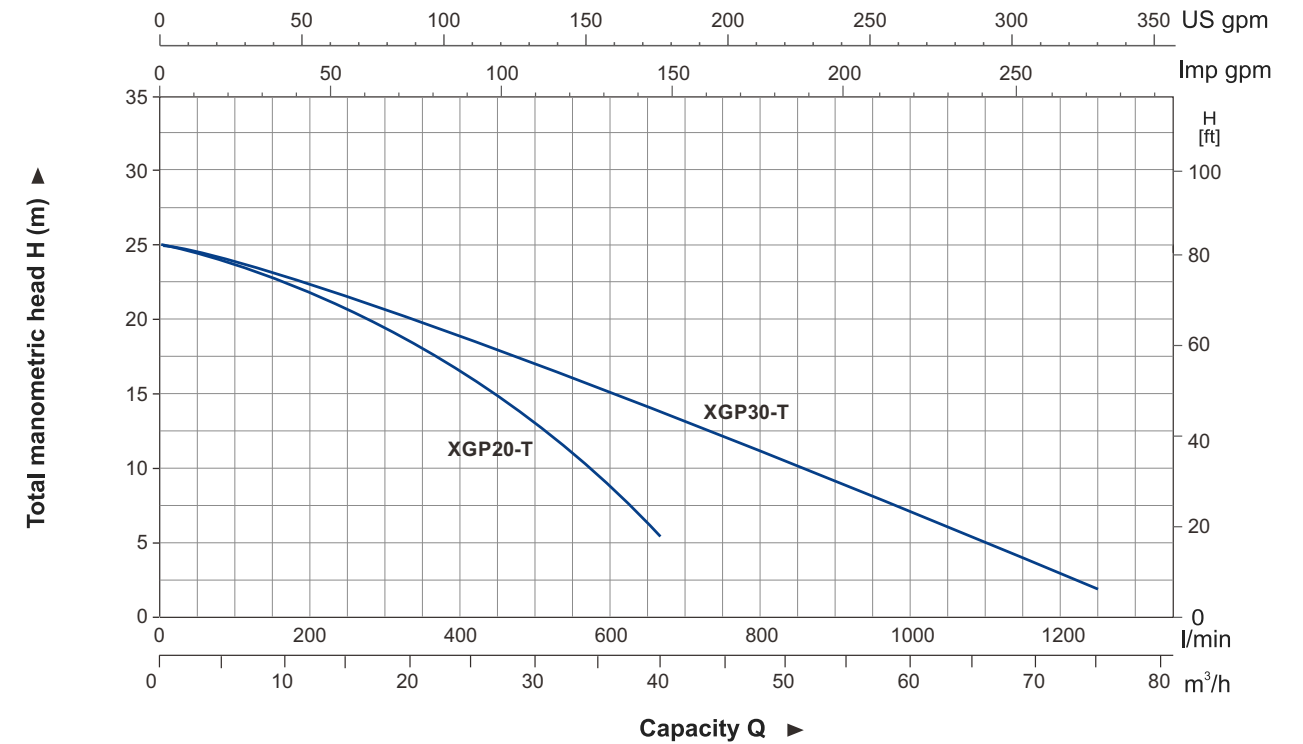
Model	Power HP	Fuel tank L	Engine Oil L	Displacement cc	Engine	Q (m³/h)															
						0	5	10	15	20	25	30	35	40	45	55	65	75			
XGP20-T	5	2.8	0.55	163	GX160	0	83.3	166.7	250	333.3	416.7	500	583.7	666.7	750	916.7	1083.3	1250			
XGP30-T	9	3.2	1.1	270	GX270	25	24.1	22.5	20.6	18.6	16.1	13.5	10	6	-	-	-	-			



## Dimension

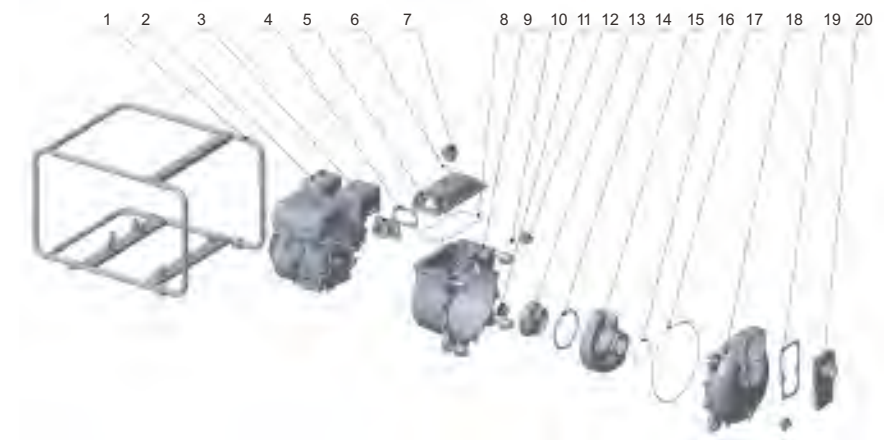
Model	DN1	DN2	L (mm)	W (mm)	H (mm)	H1 (mm)	H2 (mm)
XGP20-T	2"	2"	675	502	446	350	385
XGP30-T	3"	3"	715	502	532.5	380	415

## Hydraulic Performance Curve



## Materials Table

No.	Part	Material
1	Frame	Steel
2	Engine	
3	Outlet	Aluminum
4	Seal	NBR
5	Outlet cover	Aluminum
6	O-ring	NBR
7	Plug	
8	O-ring	NBR
9	Pump cover	Aluminum
10	O-ring	NBR
11	Mechanical seal	
12	Plug	
13	Impeller	HT200
14	O-ring	NBR
15	Diffuser	HT200
16	O-ring	NBR
17	O-ring	NBR
18	Pump body	Aluminum
19	Seal	
20	Inlet	Aluminum



## Package Information

Model	GW (kgs)	L (mm)	W (mm)	H (mm)
XGP20-T	48.8	675	502	446
XGP30-T	63	745	542	582



## Application

- Can be used to transfer slurry, liquids that containing mud, sand, small rocks and other debris diameter less than 22mm.
- Sewage treatment for civil engineering, mines, quarries and municipal facilities, ect.
- Water supply and drainage for factories,mins,municipal facilities as well as field irrigation, ect.

## Features

- All new design with ergonomic feature
- Reliable 4-stroke gasoline engine with low fuel consumption and high quality crankshaft
- Portable, durable and compact pump frame
- Durable sealing system with special mechanical seal
- Silicon carbide mechanical seal for increased abrasive resistance, longer life and less maintainance
- Pump body can easily disassembled and assembled for cleaning out debris, or pump repair

## Pump

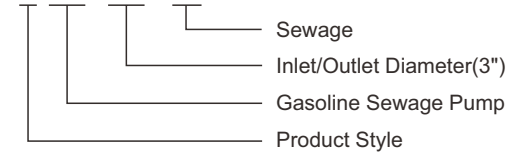
- Anti-rust cast iron impeller and diffuser
- Max.Suction: 8 m, Suck 5 m needs 120 s
- Inlet/outlet: 3"
- Max. diameter of particle: 22 mm
- Liquid temperature range: 0°C ~ 40°C

## Engine

- Single cylinder, 4-stroke, Air-cooled
- Max.power: 6.5 HP
- Rated speed: 3600 rpm
- Reliable engine equipped with low engine oil shut off system

## Identification Codes

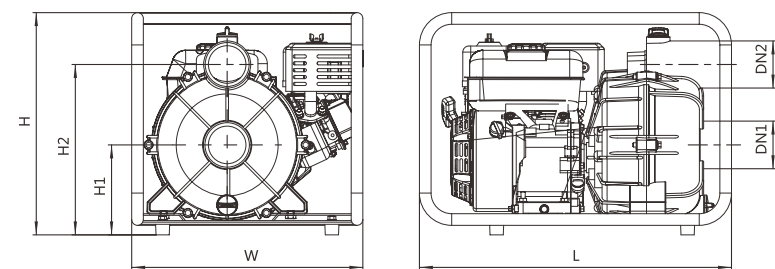
**X GP 30 - W**



**XGP**

## Technical Data

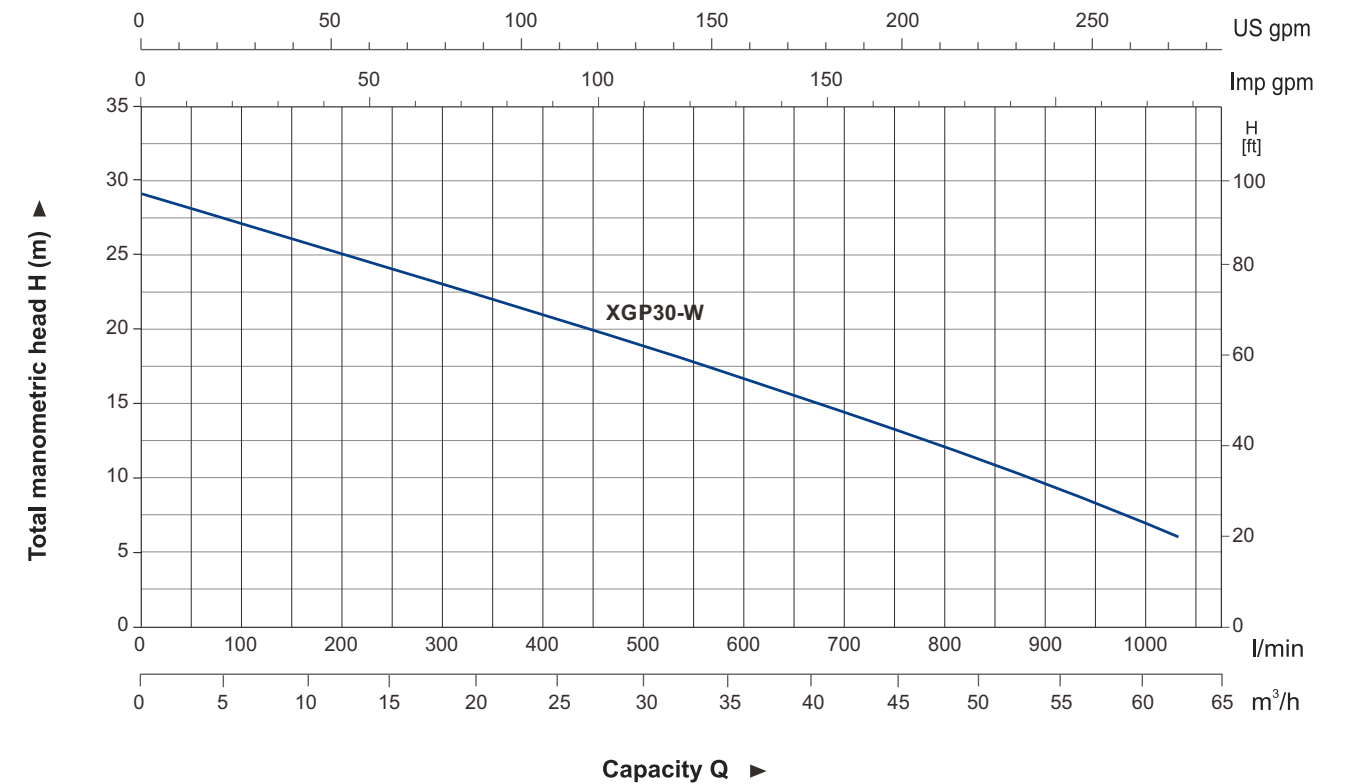
Model	Power	Fuel tank	Engine Oil	Displacement	Q(m³/h)																
	HP	L	L		cc	0	5	10	15	20	25	30	35	40	45	50	55	60			
XGP30-W	6.5	2.8	0.55	196	Q(l/min)																
					H(m)	29	27	25.5	24	22	20.5	18.5	17	15.5	14.5	11.5	9.2	7			



## Dimension

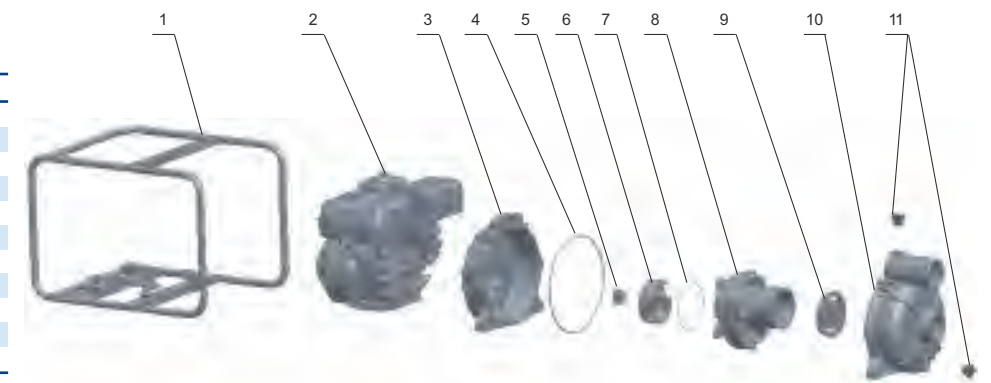
Model	DN1	DN2	L (mm)	W (mm)	H (mm)	H1 (mm)	H2 (mm)
XGP30-W	3"	3"	590	437	431	195	347

## Hydraulic Performance Curve



## Materials Table

No.	Part	Material
1	Frame	Steel
2	Engine	
3	Pump cover	Aluminum
4	O-ring	NBR
5	Mechanical seal	Silicon carbide
6	Impeller	HT200
7	O-ring	NBR
8	Diffuser	HT200
9	Non-return valve	NBR
10	Pump body	Aluminum
11	Plug	ABS



## Package Information

Model	GW (kgs)	L (mm)	W (mm)	H (mm)	Quantity (PCS/20'TEU)
XGP30-W	34.6	605	450	459	168

## Application

- To transfer clean water with liquid temperature between 0°C and 40°C
- Application in water supply and drainage for factories, mines, municipal facilities as well as field irrigation, ect.

## Features

- All new design with ergonomic feature
- High lift series with high efficient hydraulic system
- Reliable 4-stroke diesel engine with low fuel consumption and high quality crankshaft
- Portable, durable and compact pump frame
- Durable sealing system with special mechanical seal
- Optional outlet selection

## Pump

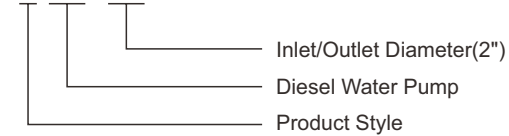
- Anti-rust cast iron impeller and diffuser
- Max.Suction: 8 m , Suck 5 m needs 120 s
- Inlet/outlet: 2"/3"

## Engine

- Single cylinder,4-stroke,Air-cooled
- Max.power: 3.8 HP
- Rated speed: 3600 rpm
- Reliable engine equipped with low engine oil shut off system

## Identification Codes

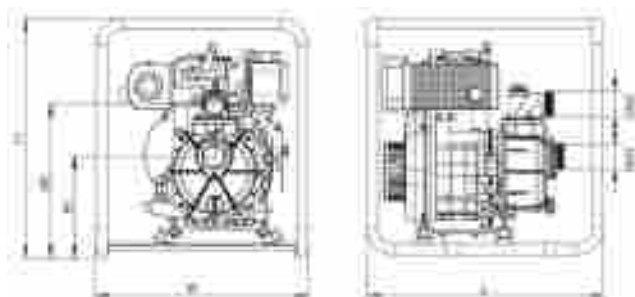
**X DP 20**



**XDP**

## Technical Data

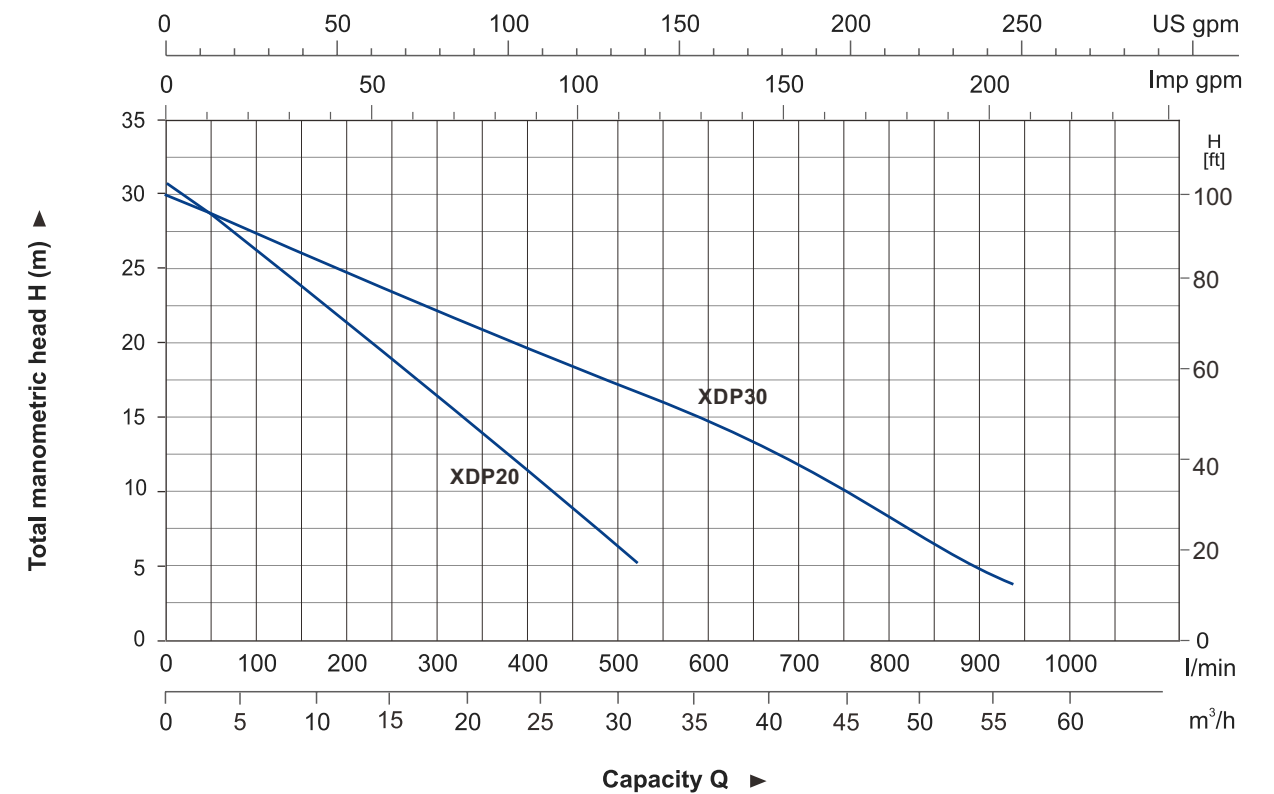
Model	Power HP	Fuel tank L	Engine Oil L	Displacement cc	Q(m³/h)	Q(l/min)																
						0	5	10	15	20	25	30	35	40	45	50	55					
XDP20	3.8	2.5	0.8	219	H (m)	31	27	23	18.4	15	10	5.9	-	-	-	-	-	-				
XDP30	3.8	2.5	0.8	219		30	27	26.5	24.1	21.4	19.3	16.7	15.8	13.5	11	8	4.8					



## Dimension

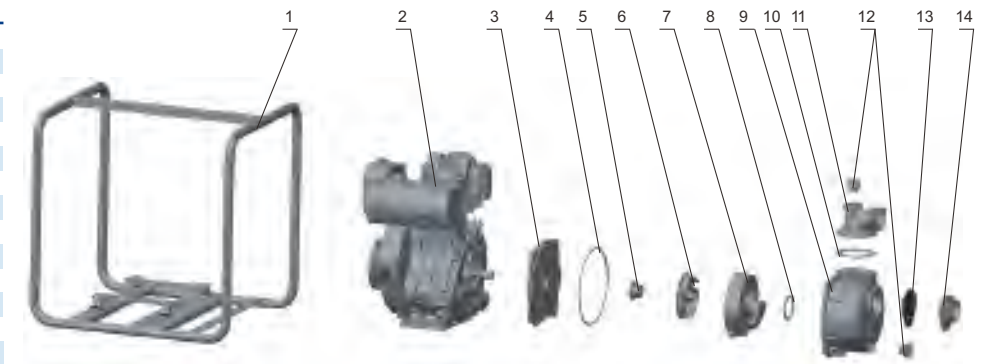
Model	DN1	DN2	L (mm)	W (mm)	H (mm)	H1 (mm)	H2 (mm)
XDP20	2"	2"	470	427	536	225	335
XDP30	3"	3"	470	427	536	240	390

## Hydraulic Performance Curve



## Materials Table

No.	Part	Material
1	Frame	Steel
2	Engine	
3	Pump cover	Aluminum
4	O-ring	NBR
5	Mechanical seal	Carbon/Ceramic
6	Impeller	HT200
7	Diffuser	HT200
8	O-ring	NBR
9	Pump body	Aluminum
10	Seal	NBR
11	Outlet	Aluminum
12	Plug	ABS
13	Non-return valve	NBR
14	Inlet	Aluminum



## Package Information

Model	GW (kgs)	L (mm)	W (mm)	H (mm)	Quantity (PCS/20'TEU)
XDP20	35.1	485	435	550	244
XDP30	36.2	485	435	550	244